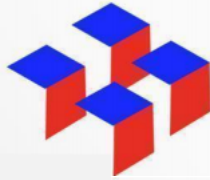


# PROFILE



## CHEMICAL & RECYCLED RESOURCES INDUSTRIAL PARK

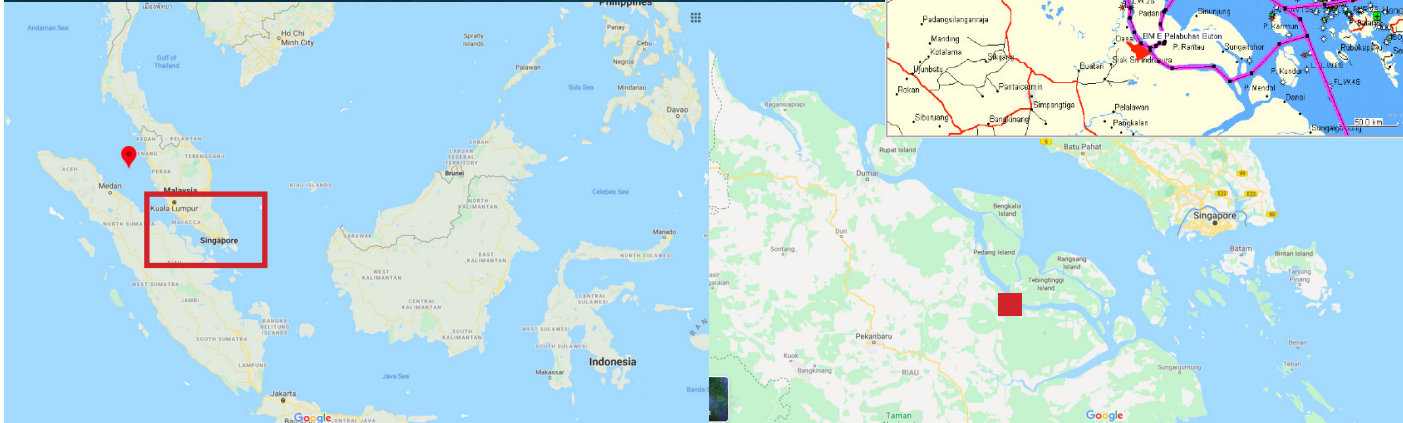
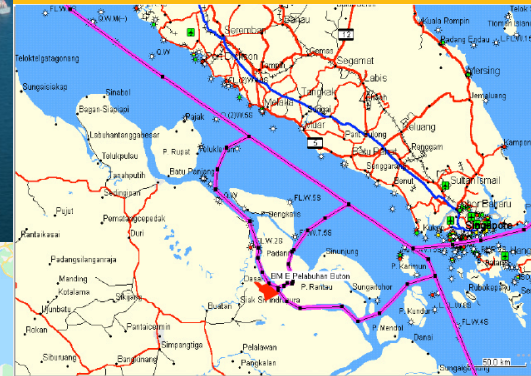


# LOCATION



a new industrial city at the west gate of Indonesia

## LOCATION OF TANJUNG BUTON INDUSTRIAL ESTATE



The location of the Tanjung Buton Industrial Estate close to the Malacca Strait and the Singapore Strait has a strategic role both nationally and internationally, especially in the trade sector and economic activities. Because the Strait of Malacca is the most congested trade route in the world, as the main route of trade traffic from India to the Middle East with East Asia to the Pacific, and vice versa.

| Alternative | Lane                    | Distance    | Traveling time (hours) |
|-------------|-------------------------|-------------|------------------------|
| Rute 1      | Buton Port - Dumai      | 148.8 Km/   | 6.50                   |
|             | - Malacca Strait        | 80.34 Mile  |                        |
| Rute 2      | Buton Port - Asam       | 112.2 Km/   | 4.41                   |
|             | Strait - Malacca Strait | 60.58 Mile  |                        |
| Rute 3      | Buton Port - Lalang     | 186.9 Km/   | 7.44                   |
|             | Strait - Malacca Strait | 100.92 Mile |                        |



### Land Availability of Tanjung Buton Industrial Estate

**5.600,3 hectare**

Area of KITB Development

**5.192 hectare**

Area of area that  
has been freed

**600 hectare**

Land Management  
Rights Certified

Located at Kampung Mengkapan and Kampung Sungai Rawa,  
Kecamatan Sungai Apit, Siak Regency – Riau Province

#### **Border**

- North : Pulau Padang (Meranti Regency)
- East : Pulau Tebing Tinggi (Meranti Regency)
- South : Kampung Sungai Rawa (Siak Regency)
- West : Kampung Sungai Rawa and Kampung Mengkapan (Siak Regency)

#### **CONDITION OF AREA**

Area is relative flat = 0 – 2 %

the waves are relatively light = 0,32 - 0,98 meters

Flow speed max = 0.682 – 0.827 M/seconds

Concentration sedimentation, max when tide = 0,41 KG/M3 DAN

Receding = 0,257 KG/M3

Feasibility of water shipping lines Asam Strait  
and some Selat Lalang from/to Tanjung Buton Port

**Groove length +- 36 mile**

**Groove width 0,7 – 1,2 mile**

**Groove depth 15 -17 m LWS**

Facilities are available to accommodate anchored vessel and guide services.

*Results of The Technical Survey of The Ministry of Transportation Republic of Indonesia*



# Priority Areas for the Sumatra Region Strategic Development Project

Siak Regency has been designated as one of the Locations of the Center for Industrial Growth (WPPI) in Riau Province in addition to Bengkalis Regency and Dumai City and Tanjung Buton Industrial Estate as Industrial Estates (PP Number 14 Year 2015 concerning RIPIN)

**Tanjung Buton Industrial Estate is Locations of the Center for Industrial Growth (WPPI) Siak (RIPI PROVINSI RIAU 2018-2038 berdasarkan PERDA Nomor 9 Tahun 2018)**

## Priority Project for Development of Strategic Areas for Sumatra Region Development

Tanjung Buton Industrial Estate (KITB) through Presidential Regulation Number 18 Year 2020 Regarding the National Medium-Term Development Plan 2020-2024, has been established as one of the Priority Development Projects for the Sumatra Region Development Strategic Area.

## National Strategic Project

Tanjung Buton Industrial Estate (KITB) through Presidential Regulation Number 58 Year 2017 Regarding Amendments to Presidential Regulation Number 3 Year 2016 Regarding the Acceleration of the Implementation of National Strategic Projects, has been established as one of the National Strategic Projects (PSN).

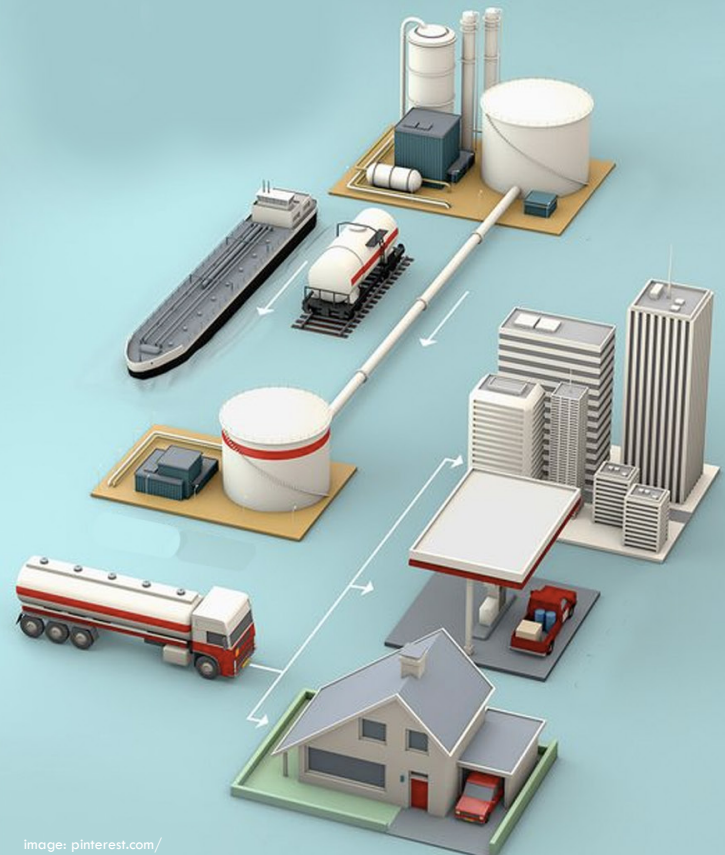


image: pinterest.com/



image: <https://www.gettyimages.com/>

## A Gatherer of Port

Decree of the Minister of Transportation Number KP. 901 of 2016 concerning the National Port Master Plan, Tanjung Buton Port, as a support to the Tanjung Buton Industrial Zone, is designated as the Collecting Port

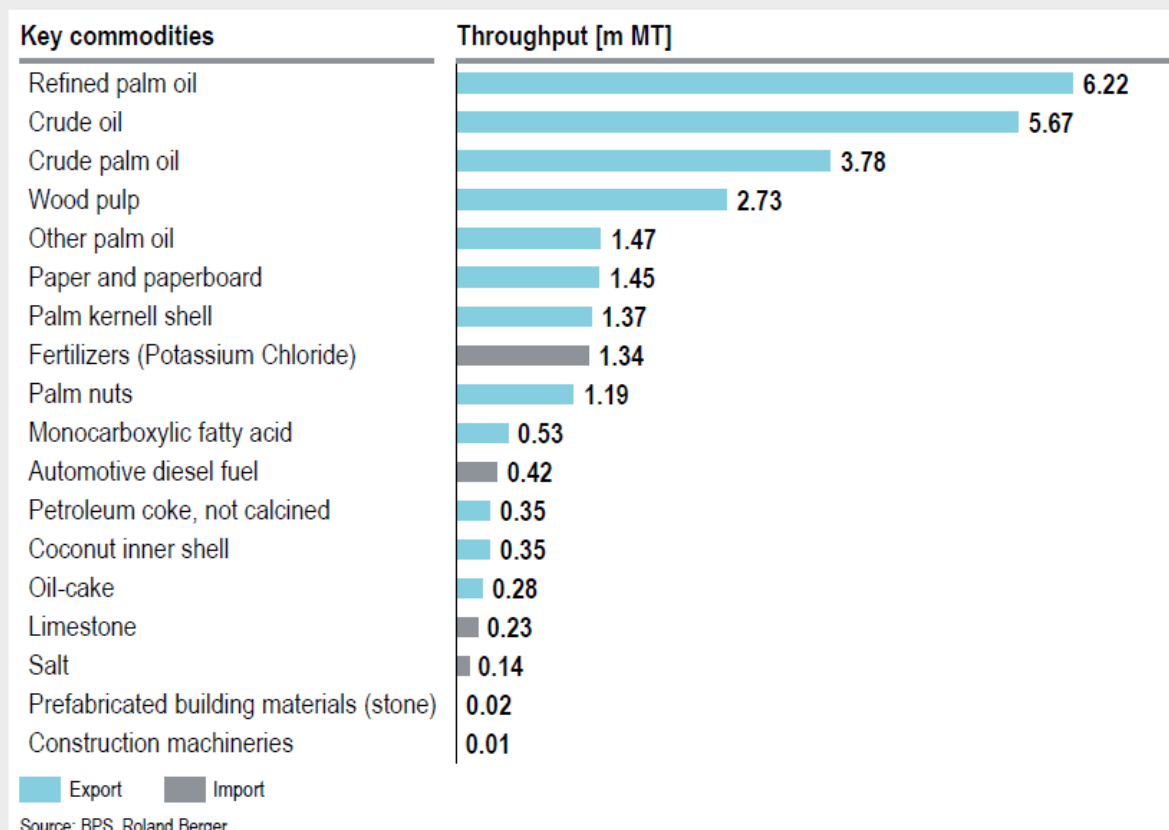
## Quality Improvement of National Roads to the Tanjung Buton Industrial Park

Decree of the Minister of PU-PERA RI Number 248 / KPT S / M / 2015 Regarding the Determination of Roads in the Primary Road Network According to Functioning as Primary Arterial Roads (JAP) and Collector-1 Roads (JKP-1). In 2018 an Improved Quality of National Road Into the Tanjung Buton Industrial Estate.

## Tanjung Buton Industrial Estate has a strategic role on the economy, social welfare, defense, national sovereignty, and economic equality.

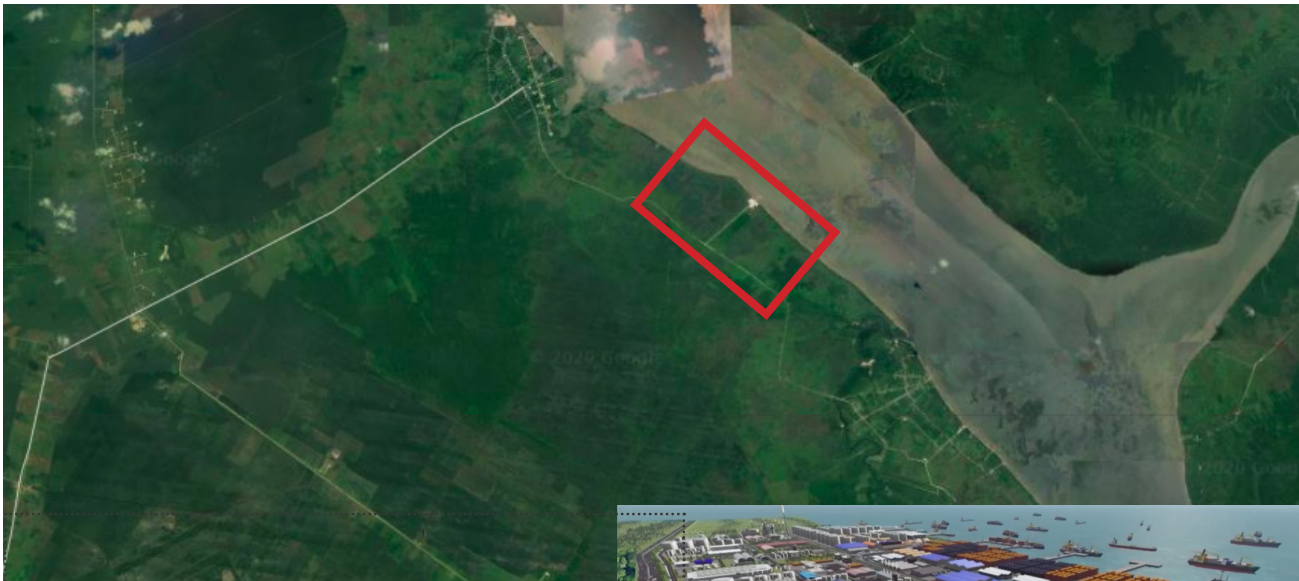
- The potential for resources is enormous in Riau, especially in the oil and gas, plantation and forestry sectors
- Riau's economic activities are centered on selling small added value raw materials.
- Efforts to increase the added value of natural resources by optimizing the role of the secondary sector (industry).
- In the long term, it supports substitute economic activities that are not based on non-renewable natural resources.
- The limitations of the Siak River in accommodating industries along the Siak River that demand changes in their roles and functions in the future
- Increasing service activities and the economy requires efforts to optimize the use of natural resources.
- Riau is the second most trafficked zone after Batam (Riau islands), representing 27.8% of Sumatra's exports and 15.2% of Sumatra's imports
- Riau's major exports are palm oil (47%), crude oil (22%) and wood and wood products (17%)
- Riau's major imports are chemicals and allied industries (47%), mineral products (16%), wood and wood products (15%) and crude oil (15%)
- Riau international trade is dominated by refined palm oil export (20%) and crude oil export (18%)
- Wood pulp export contributes around 50% of total wood and wood products international trade
- Chemical trade is mostly dominated by fertilizer import (48% of total chemical industries trade)
- Outside the top 7 industries, building materials and construction machineries contributes 40% of non top 7 industries trade
- Riau has 4 m ha of oil palm plantation with 250 palm oil mills producing approximately 9 m mt of CPO annually
- Riau's crude oil production is over 300k bbpd against Indonesia's total production of 800k bbpd

## Strong Economic Fundamentals





MASTER PLAN TANJUNG BUTON INDUSTRIAL ESTATE



|                 |                  |
|-----------------|------------------|
| Phase I area    | ± 340 Hectares   |
| Phase II area   | ± 253 Hectares   |
| Phase III area  | ± 481 Hectares   |
| Phase IV area   | ± 344 Hectares   |
| Phase V area    | ± 472 Hectares   |
| Phase VI area   | ± 993 Hectares   |
| Phase VII area  | ± 747 Hectares   |
| Supporting area | ± 1.915 Hectares |
| Port area       | ± 270 Hectares   |







Jalan Buton - Sungai Rawa

## DEVELOPMENT OF TANJUNG BUTON INDUSTRIAL ESTATE PHASE I (300 hectares / 6%)

|    |                              |    |                               |
|----|------------------------------|----|-------------------------------|
| B  | Support oil and gas Industry | P  | Support oil and gas Industry  |
| C  | Steel industry               | Q  | Steel industry                |
| D  | Dray Part                    | R  | Aboratory and training centre |
| E  | Argo Tourism industry        | S  | Office complex                |
| F  | Health Facilities            | T  | Sport Center                  |
| G  | Worship Facilities           | U  | Paper processing industry     |
| H  | Innovation Building          | V  | Wood processing industry      |
| I  | Multipurpose building        | Yc | The fisheries industry        |
| L  | Power Plan                   | F1 | The food industry             |
| M  | reservoir for water clean    | Yk | Industry                      |
| N  | Office Complex KITB          | Hs | Palm oil industry             |
| D1 | Open storage                 | IT | Industrial Area               |



## INDUSTRIAL PRIORITIES DEVELOPED

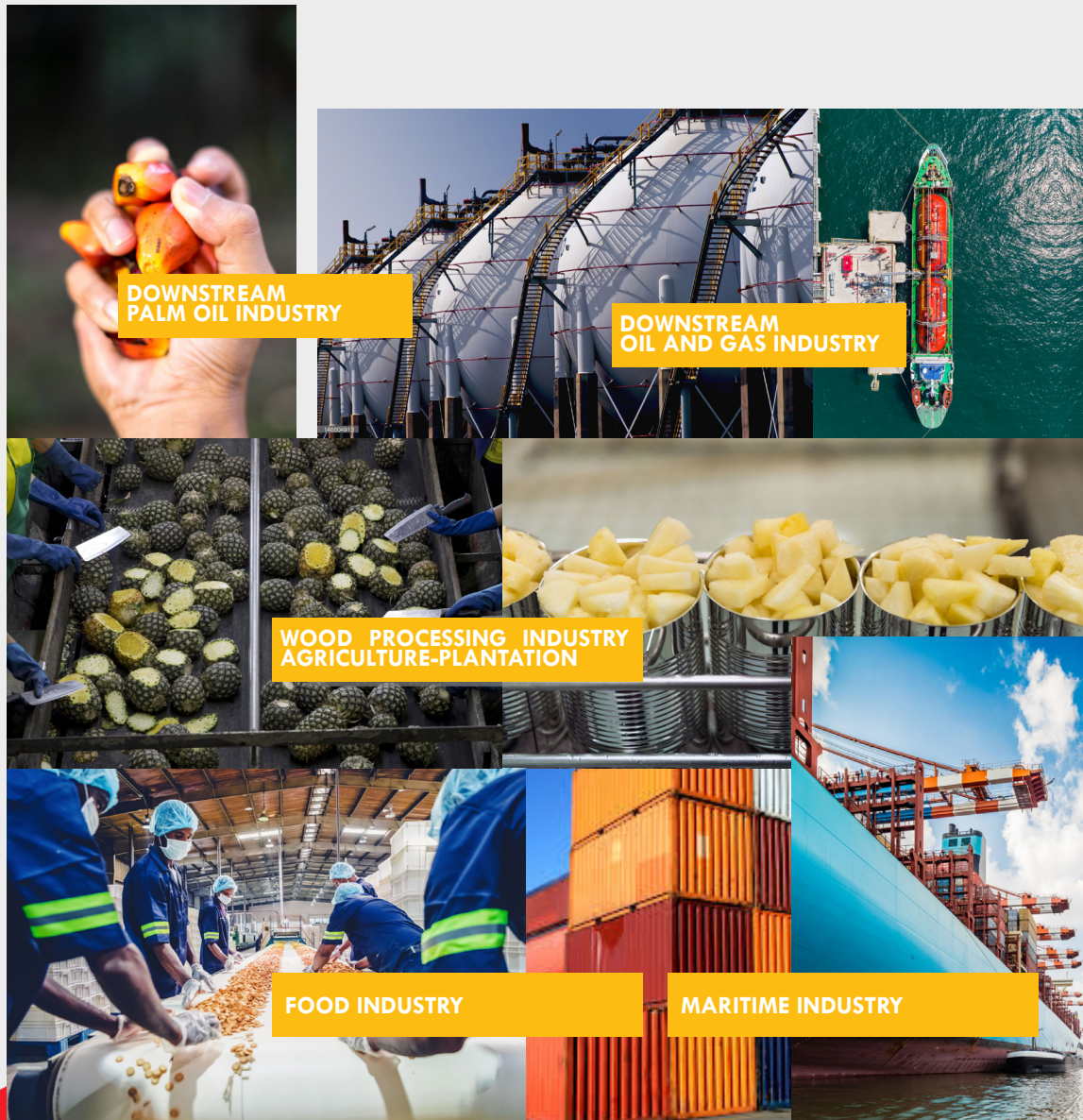


image: <https://www.gettyimages.com/>



Alignment between various infrastructure sectors  
(mutual support or complementary).

Tanjung Buton Industrial Estate is integrated with  
Tanjung Buton Port so logistical access is easier



## ECONOMIC IMPACT ESTIMATION TANJUNG BUTON INDUSTRIAL ESTATE

**21,600**

LABOR

**Rp12.52 T**

CONTRIBUTION OF REGIONAL  
DOMESTIC REVENUE OF BRUTO

**Rp21.600 T**

INVESTMENT POTENTIAL





# TANJUNG BUTON PORT DESIGN

- Oil and gas area
- CPO area
- Dry bulk area
- Container and warehouse area
- Shipyards area
- Public facilities area
- PT Bosowa
- Tanjung Buton Port
- Office space area
- Quarantine, TPS B3  
and other general facilities





# PORT BUSINESS OPERATIONAL ACTIVITIES

## VESSEL VISIT AND LOAD UNLOCK

### BUP PT SAMUDERA SIAK

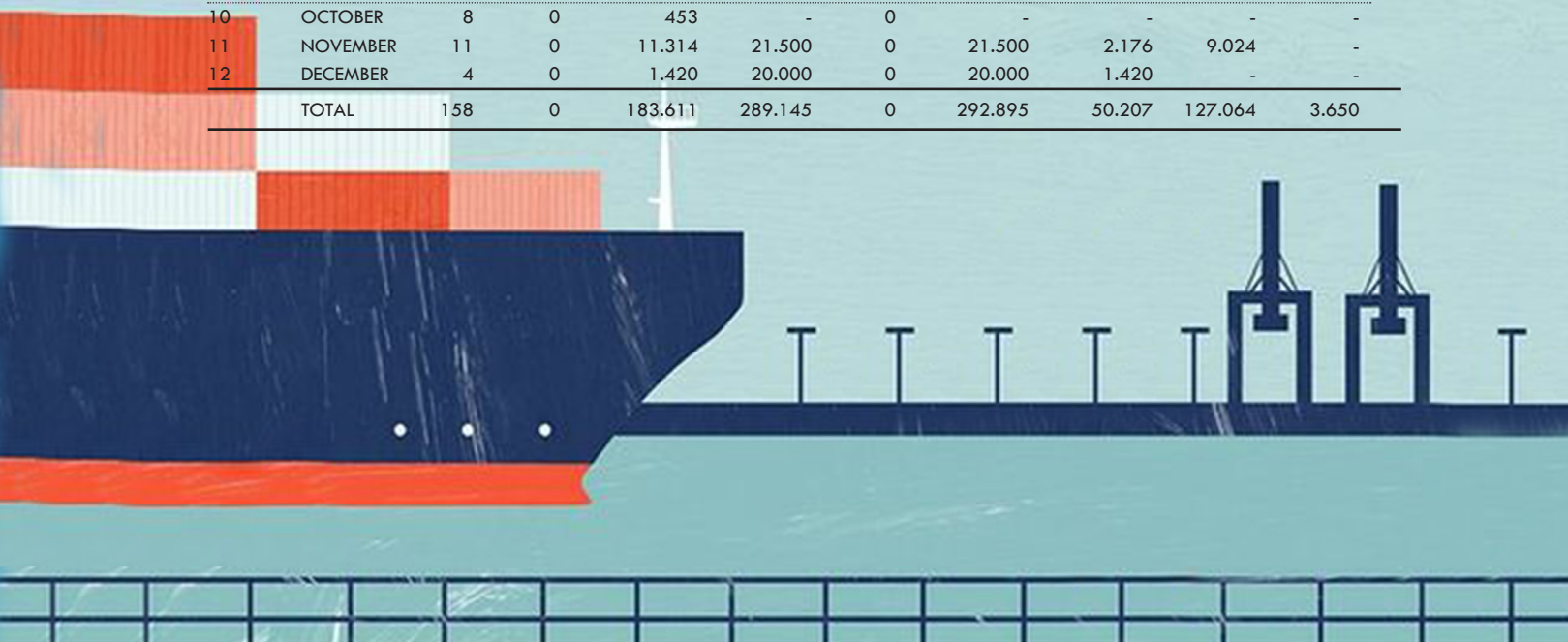


2018

| NO    | MONTH     | CALL | UNLOADING |                  | LOADING |                  | TYPES OF GOODS |                    |               |     |
|-------|-----------|------|-----------|------------------|---------|------------------|----------------|--------------------|---------------|-----|
|       |           |      | IMPORT    | INTER<br>-ISLAND | EXPORT  | INTER<br>-ISLAND | POF/<br>TON    | FERTILIZER/<br>TON | STONE/<br>TON | CAR |
| 1     | JANUARY   | 15   | 0         | 12               | 3       | 0                | 30.000         | 5.334              | -             | 300 |
| 2     | FEBRUARY  | 12   | 0         | 7                | 5       | 0                | 68200          | 2.442              | -             | 333 |
| 3.    | MARCH     | 12   | 0         | 15               | 2       | 0                | 21.405         | 6.091              | -             | 103 |
| 4.    | APRIL     | 14   | 0         | 11               | 3       | 0                | 52.906         | 6.414              | -             | -   |
| 5     | MAY       | 9    | 0         | 7                | 2       | 0                | 20.000         | 4.874              | -             | -   |
| 6     | JUNE      | 7    | 0         | 6                | 1       | 0                | 11.000         | 3.392              | -             | -   |
| 7     | JULY      | 7    | 0         | 5                | 2       | 0                | 20.924         | 3.366              | -             | -   |
| 8     | AUGUST    | 14   | 0         | 10               | 4       | 0                | 60.500         | 6.572              | -             | -   |
| 9     | SEPTEMBER | 13   | 0         | 9                | 4       | 0                | 42.000         | 5.972              | -             | -   |
| 10    | OCTOBER   | 14   | 0         | 10               | 4       | 0                | 41.000         | 6.368              | -             | -   |
| 11    | NOVEMBER  | 7    | 0         | 5                | 2       | 0                | 21.537         | 2.050              | 6.306         | -   |
| 12    | DECEMBER  | 6    | 0         | 5                | 2       | 0                | 21.537         | 2.686              | 3.903         | -   |
| TOTAL |           | 130  | 0         | 97               | 33      | 0                | 399.532        | 55.562             | 10.209        | 736 |

2019

| NO    | MONTH     | CALL | UNLOADING |                  | LOADING |                  | TYPES OF GOODS |                    |               |                 |
|-------|-----------|------|-----------|------------------|---------|------------------|----------------|--------------------|---------------|-----------------|
|       |           |      | IMPORT    | INTER<br>-ISLAND | EXPORT  | INTER<br>-ISLAND | POF/<br>TON    | FERTILIZER/<br>TON | STONE/<br>TON | GENERAL/<br>TON |
| 1     | JANUARY   | 11   | 0         | 9.262            | 41.050  | 0                | 41.050         | 6.561              | 2.701         |                 |
| 2     | FEBRUARY  | 13   | 0         | 21.255           | 10.500  | 0                | 12,500         | 3.450              | 14.995        | 800             |
| 3     | MARCH     | 14   | 0         | 8.110            | 21.000  | 0                | 21.000         | 7.310              |               | 800             |
| 4     | APRIL     | 17   | 0         | 28.521           | 20.003  | 0                | 21.753         | 4.026              | 23.495        | 1.000           |
| 5     | MAY       | 15   | 0         | 23.341           | 17.381  | 0                | 17.381         | 5.896              | 16.395        | 1.050           |
| 6     | JUNE      | 15   | 0         | 14.791           | 33.089  | 0                | 33.089         | 6.722              | 8.069         | -               |
| 7     | JULY      | 17   | 0         | 21.578           | 34.869  | 0                | 34.869         | 5.956              | 15.622        | -               |
| 8     | AUGUST    | 14   | 0         | 21.635           | 38.140  | 0                | 38.140         | 2.750              | 18.885        | -               |
| 9     | SEPTEMBER | 18   | 0         | 21.931           | 31.613  | 0                | 31.613         | 3.930              | 17.878        | -               |
| 10    | OCTOBER   | 8    | 0         | 453              | -       | 0                | -              | -                  | -             | -               |
| 11    | NOVEMBER  | 11   | 0         | 11.314           | 21.500  | 0                | 21.500         | 2.176              | 9.024         | -               |
| 12    | DECEMBER  | 4    | 0         | 1.420            | 20.000  | 0                | 20.000         | 1.420              | -             | -               |
| TOTAL |           | 158  | 0         | 183.611          | 289.145 | 0                | 292.895        | 50.207             | 127.064       | 3.650           |



a new industrial city at the west gate of Indonesia



CHEMICAL  
RECYCLED RESOURCES  
INDUSTRIAL PARK



OFFICE: CLB HOLDING PTE LTD

625A Geylang Road Singapore 389562

+65 90068561